

## Introduction

American Innovations (AI) is pleased to announce version 1.6 of our Pipeline Compliance System Axis® software (PCS Axis®). This document explains how to upgrade the PCS Axis database, application, and job service agent to version 1.6. The information applies to the following types of upgrade installations:

- Client/server installation (with and without replication)
- Subscription in a client/server network with replication (remote client)
- Single-user local installation in a non-client/server network

Topics in this document include those in the following list:

- *PCS Axis Best Practices* (page 2)
- *Upgrading a Client/Server Installation of PCS Axis* (page 9)
- *Creating a Database Maintenance Job on the Server* (page 17)
- *Upgrading a PCS Axis Subscription for a Remote Client* (page 18)
- *Upgrading a Single-User Local Installation in a Non-Client/Server Network* (page 22)
- *Product Support and Training* (page 29)

Information in this document is intended for the IT System Administrator or a person with a Windows *Administrator* user account. The person performing the upgrade must also be assigned the database role of *DBO* (database owner) to successfully upgrade the database when using *PCS Axis Connection Manager*. Database roles are assigned to SQL logins either by your company's IT System Administrator or Database Administrator.

If you have questions or need assistance with the upgrade installation, contact [PCS Technical Services](#) using the contact information on page 29.


## PCS Axis Best Practices

*PCS Axis Best Practices* is a series of topics demonstrating best practices for setting up the PCS Axis<sup>®</sup> database and related services on a network server running Microsoft<sup>®</sup> SQL Server<sup>®</sup> 2008 R2. Topics include those in the following list:

- *PCS Axis Job Service*
- *PCS Axis Database* (page 4)
- *SQL Server (MSSQLServer) Service* (page 7)

## PCS Axis Job Service

Run the *PCS Axis Job Service* under a domain account or a SQL Server account with access to the server and PCS Axis database. To set up *PCS Axis Job Service*, follow these steps:

- 1 Click the Windows **Start** button  and navigate to **Computer**. Right-click **Computer** and select **Manage** in the shortcut menu to open the *Computer Management* console (Figure 1).
- 2 Double-click **Services and Applications** in the left pane of the console. Then click **Services** to display a list of services in the middle pane.

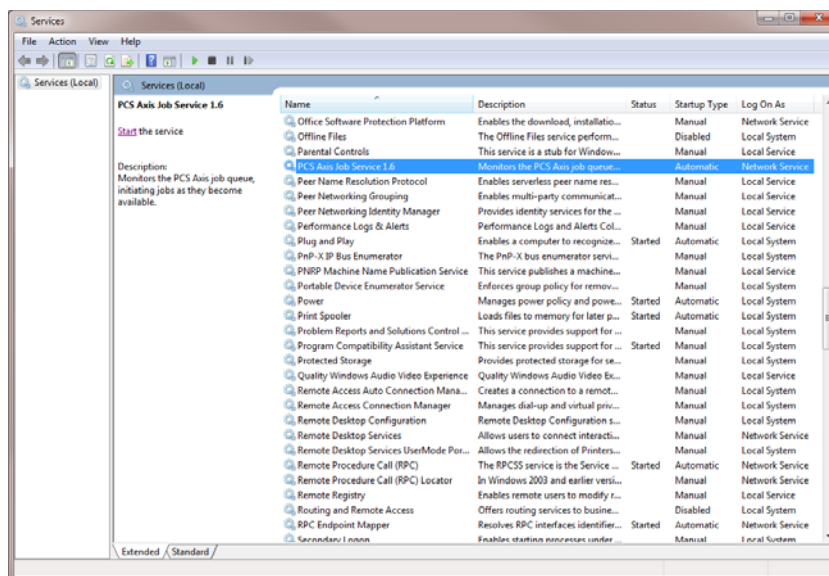


Figure 1. Computer Management Console

- 3 Right-click **PCS Axis Job Service 1.6** and select **Properties** in the shortcut menu to open the *Properties* dialog box (Figure 2).
- 4 Click the **Log On** tab and select the option **This account**.
- 5 Set up *PCS Axis Job Service* with a user account to log on as a service using a domain account or a SQL Server account with access to the server and PCS Axis database. Type the user name and password in the appropriate fields (*This account*, *Password*, *Confirm Password*). You can also view a list of appropriate user account by clicking *Browse > Advanced > Find Now*.

**NOTE:** The user account must be a member of the *Axis\_Users* group and have access to the database server and PCS Axis database.

- 6 Click **Apply** and then **OK** to close the *Properties* dialog box and return to the *Computer Management* console.
- 7 Click **File > Exit** to close the *Computer Management* console.

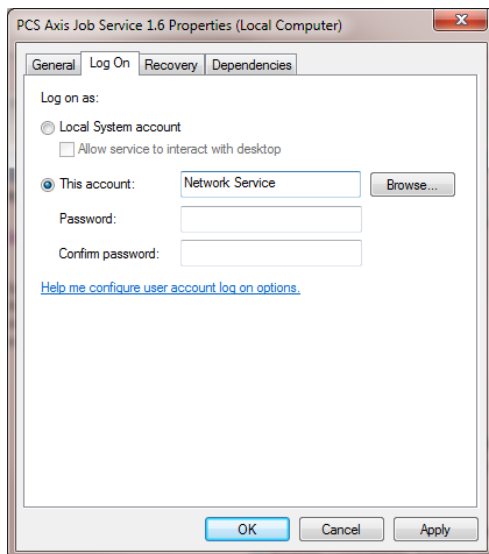


Figure 2. *PCS Axis Job Service 1.6 Properties*

## PCS Axis Database

Information in this section covers best practices for managing the PCS Axis database using Microsoft® SQL Server® Management Studio (SSMS). Topics include those in the following list:

- *Setting the Database Owner*
- *Recommended Autogrowth Setting* (page 5)

### Setting the Database Owner

To prevent errors from occurring when migrating or restoring the PCS Axis database, or when establishing a connection, set the “Owner” of the database using the “sa” account. To set the database “Owner” follow these steps:

- 1 Start SQL Server Management Studio (SSMS). Click **Start > Microsoft SQL Server 2008 R2 > SQL Server Management Studio**.
- 2 Double-click the **Databases** folder in *Object Explorer* to open the folder.
- 3 Right-click the **PCS Axis database** and select **Properties** in the shortcut menu to open the *Database Properties* dialog box (Figure 3).
- 4 Select **Files** in the *Select a page* navigation panel.
- 5 Type **sa** in the *Owner* field. Then click **OK** to save changes and close the dialog box.

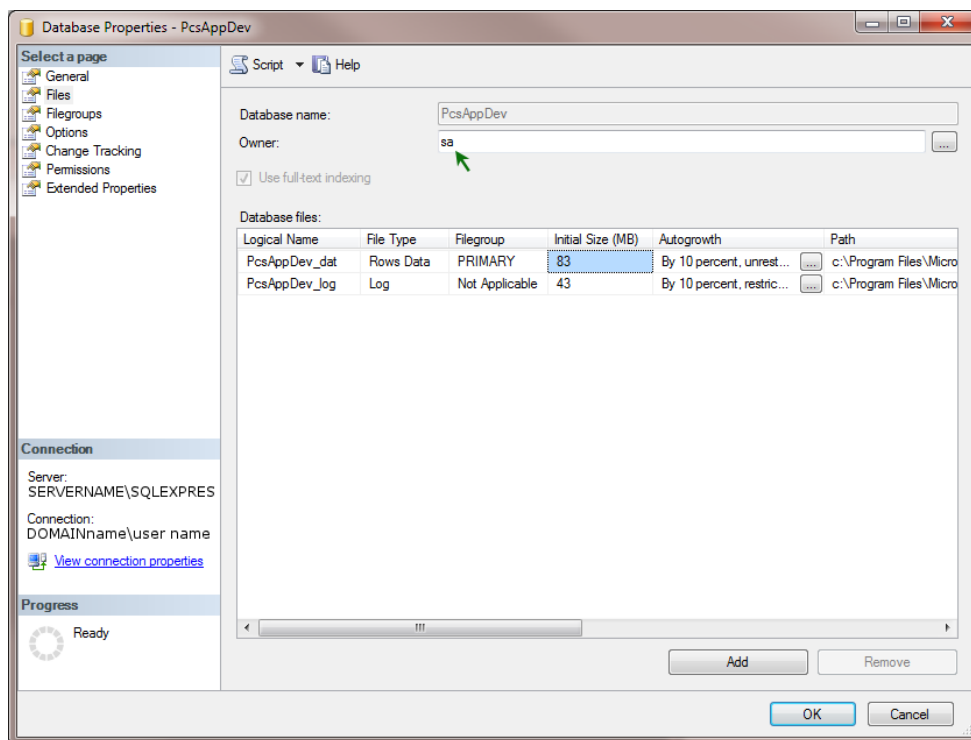


Figure 3. Database Owner

## Recommended Autogrowth Setting

Information in this section applies to the PCS Axis database and log file. If you are running PCS Axis in a client/server network with synchronization, the information also applies to the publication and subscription databases.

*Autogrowth* indicates how much additional space is allocated when the PCS Axis database and log file require more space. Setting *Autogrowth* properties allow the PCS Axis database and log file to resize automatically based on a predetermined percentage. Because the database resizing process is a significant drain on computer resources, it is recommended that you set properties in a manner that does not allow the database to constantly resize itself.

**NOTE:** When using PCS Axis with synchronization, set *Autogrowth* properties after you create the publication and subscription databases.

To set *Autogrowth* properties for the database (\_dat) and log (\_log) files, follow these steps:

- 1 Start SSMS. Click **Start > Microsoft SQL Server 2008 R2 > SQL Server Management Studio**.
- 2 Double-click **Databases** in *Object Explorer*.
- 3 Right-click the PCS Axis database and select **Properties** in the shortcut menu to open the *Database Properties* dialog box.
- 4 Click **Files** in the *Select a page* navigation panel (Figure 4).

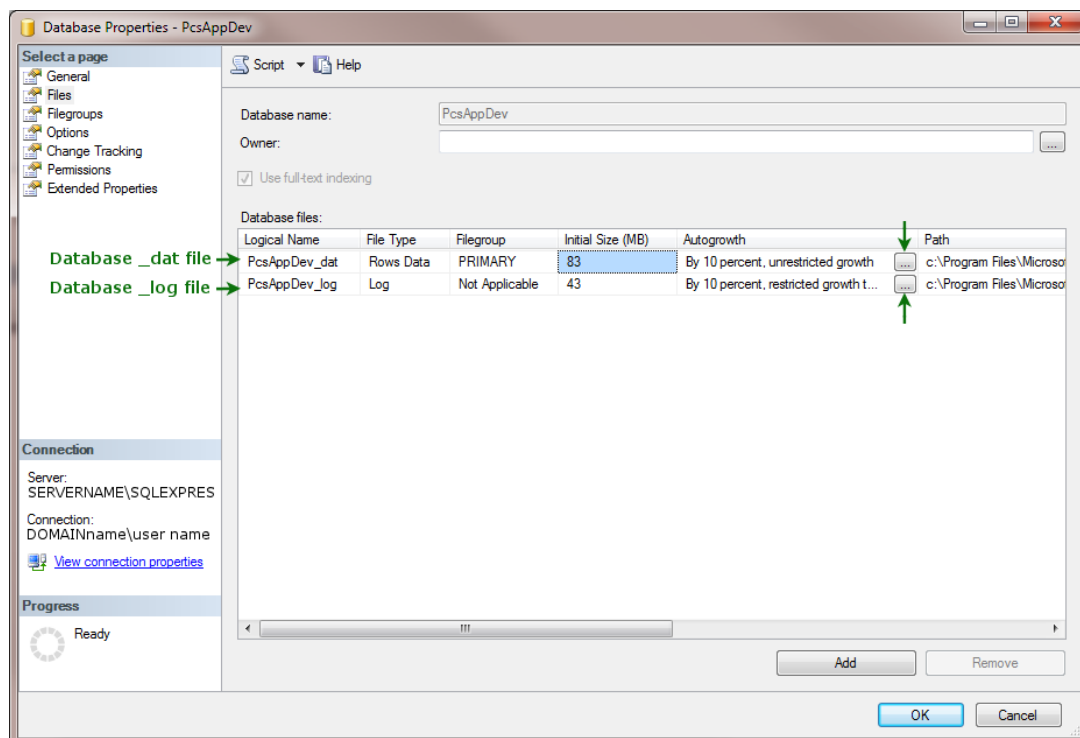


Figure 4. Files - Database Properties

- 5 Complete the following steps to set *Autogrowth* properties for the database (\_dat) and log (\_log) files:
  - a Click the ... ellipsis button in the *Autogrowth* column of the database \_dat file to open the *Change Autogrowth* dialog box (Figure 5).
  - b Click the **Enable Autogrowth** check box to place a check mark inside the check box.
  - c For the *File Growth* property setting, select the option **In Percent** and then type **10** in the adjacent field. This property setting automatically allocates 10% additional space when the database requires more space.
  - d Click **OK** to close the *Change Autogrowth* dialog box.
  - e Repeat step 5 for the database \_log file.
  - f Click **OK** to close the *Database Properties* dialog box. Then click **File > Exit** to exit SSMS.

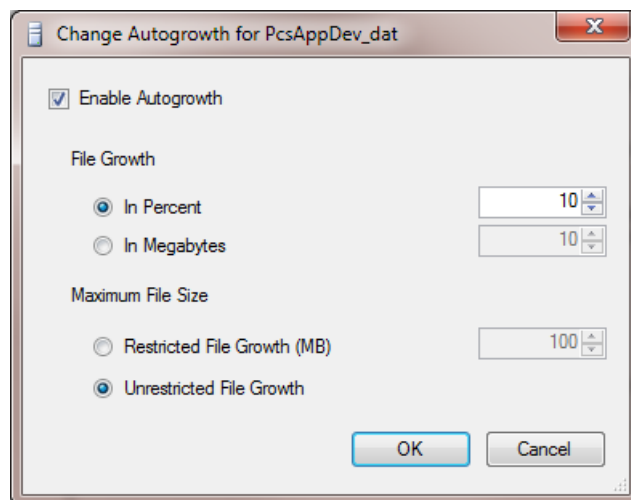



Figure 5. *Change Autogrowth*

## SQL Server (MSSQLSERVER) Service

Run the Windows *SQL Server (MSSQLSERVER)* service under a domain account with access to the PCS Axis database. To set up the service, follow these steps:

- 1 Click the Windows **Start** button  and navigate to *Computer*. Right-click **Computer** and select **Manage** in the shortcut menu to open the *Computer Management* console (Figure 6).
- 2 Double-click **Services and Applications** in the left pane of the console. Then click **Services** to display a list of services in the middle pane.

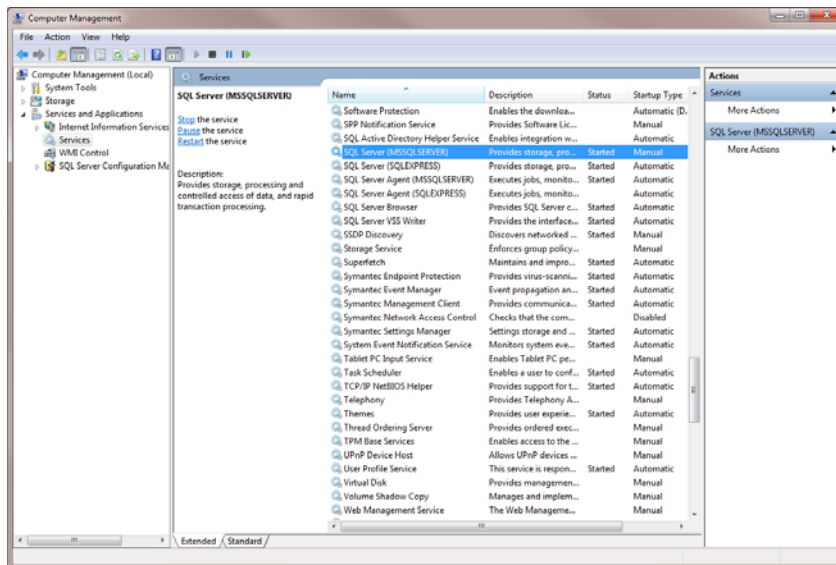


Figure 6. Computer Management Console

- 3 Right-click **SQL Server (MSSQLSERVER)** and select **Properties** in the shortcut menu to open the *Properties* dialog box (Figure 7).

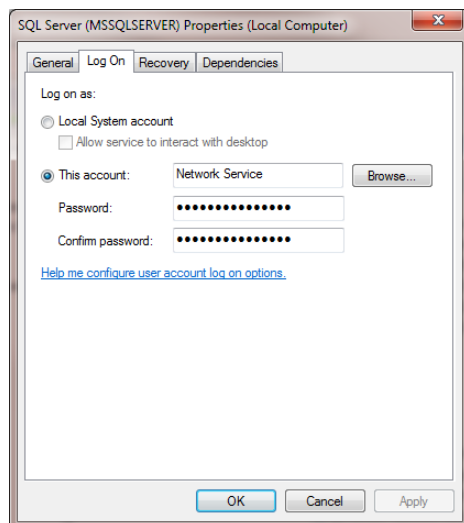


Figure 7. SQL Server (MSSQLSERVER) Properties

- 4 Click the **Log On** tab and select the option **This account**.
- 5 Set up *SQL Server (MSSQLSERVER)* with a user account to log on as a service using a domain account with access to the PCS Axis database. Type the user name and password in the appropriate fields (*This account, Password, Confirm Password*). You can also view a list of appropriate user account by clicking *Browse > Advanced > Find Now*.
- 6 Click **Apply** and then **OK** to close the *Properties* dialog box and return to the *Computer Management* console.
- 7 Click **File > Exit** to close the *Computer Management* console.

## Upgrading a Client/Server Installation of PCS Axis

The procedure in this section explains how to upgrade the PCS Axis database, application, and job service agent in a client/server installation. Upgrading the database on the server is accomplished using *PCS Axis Connection Manager* during the upgrade of a client computer.

Topics in this section include those in the following list:

- *PCS Axis v1.6 Download Package*
- *Upgrading to PCS Axis v1.6* (page 9)

### PCS Axis v1.6 Download Package

Upgrading PCS Axis to v1.6 requires the download package provided by PCS Technical Services. Information in an email from PCS Technical Services identifies how to obtain and download a copy of the download package to your computer. If you need a copy of the download package, contact PCS Technical Services using the contact information on page 29.

The PCS Axis v1.6 download package includes the following files:


- **PCS Axis v1.6 Installation File:** Use this installation file (labeled *PCSAxis\_1.6.xx.exe*) to install PCS Axis 1.6 on 32- or 64-bit computer system. (The letters "xx" are used only as a placeholder to represent the actual numbers used in the name of the installation file.)
- **Fill Factor Reset Script:** This optional utility script (labeled *Defrag Fill Factor Reset Post Deployment.SQL*) is intended for your company's Database Administrator (DBA). During the upgrade of the PCS Axis database, the "fill factor limit" is set and the *Reindex Stored Procedure* (labeled *dbo.DefragmentIndexes*) installs in the database. If needed, the DBA can use the optional utility script to reset the "fill factor limit" after the database upgrade.

### Upgrading to PCS Axis v1.6

The procedure in this section explains how to upgrade a client computer and the database on the database server to PCS Axis v1.6.

Complete the following steps:

- 1 Complete the following steps on the database server:
  - a Run Microsoft® SQL Server Management Studio (SSMS) and establish a connection to the PCS Axis database.
  - b Use SSMS to make a backup of the PCS Axis database. Exit SSMS when you finish.

- 2 If you are upgrading *PCS Axis v1.4* or earlier, uninstall PCS Axis on the client computer. Click the Windows  **Start** button, then click **All Programs > PCS Axis 1.4 > Uninstall PCS 1.4**.

**NOTE:** The upgrade process automatically uninstalls PCS Axis when upgrading from v1.5 to v1.6; manually uninstalling v1.5 is no longer required. Upgrading a version previous to v1.5 does however require uninstalling the older version of PCS Axis.

- 3 Open the folder containing the PCS Axis 1.6 download package.
- 4 Double-click the PCS Axis installation file labeled **PCSAxis\_1.6.xx.exe** to open the PCS Axis dialog box (Figure 8). The letters “xx” are used only as a placeholder to represent the actual numbers used in the name of the installation file.

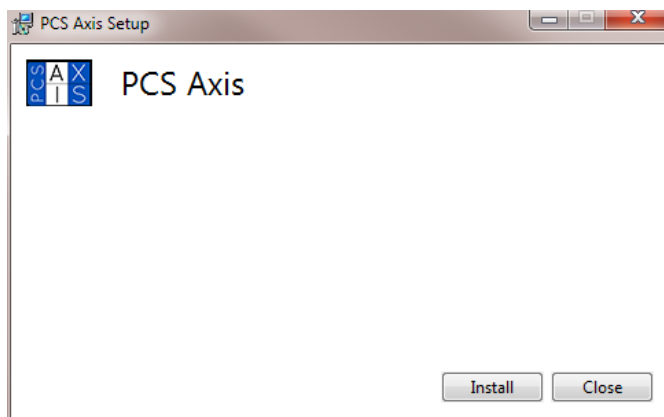


Figure 8. PCS Axis Installation

- 5 Click **Install** in the PCS Axis dialog box to open *Setup Wizard* (Figure 9).

**NOTE:** After clicking *Install* the PCS Axis installer verifies if Microsoft .NET Framework is installed on the computer. If .NET Framework is not installed, the PCS Axis installer automatically installs .NET Framework and then continues with the PCS Axis installation.

- 6 Click **Next** to read the *End-User License Agreement*. To accept the license agreement, click the check box **I accept the terms in the License Agreement** to place a check mark inside the check box.

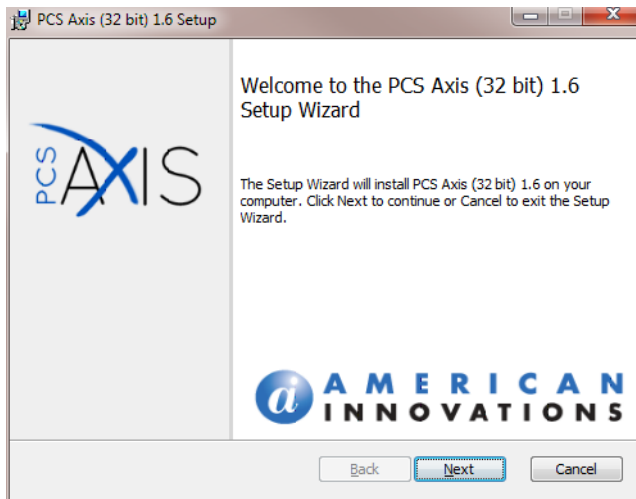




Figure 9. Setup Wizard

- 7 Click **Next** to display *Custom Setup* (Figure 10).
- 8 By default the  **PCS Axis** application is selected for installation. The  **PCS Axis Job Service** **should not** be selected for installation. Verify selections in *Custom Setup* match those in the next figure (Figure 10).
- 9 Click **Next** and then click **Install** to upgrade the PCS Axis application on the client computer.

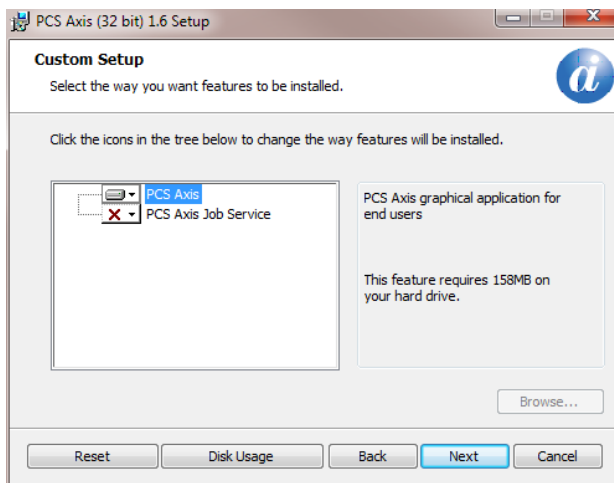






Figure 10. Custom Setup

- 10 When the installation completes and after a short delay, *PCS Axis Connection Manager* opens. Click  **Close** to exit *PCS Axis Connection Manager*.
- 11 Complete the following steps to establish a database/server connection and upgrade the PCS Axis database to v1.6:
  - a Start *PCS Axis Connection Manager*. Click the Windows  **Start** button, then click **All Programs > PCS Axis 1.6 >  PCS Axis Connection Manager 1.6** (Figure 11, page 12).
  - b Click **Select** in the *Server* field and select the database server hosting the PCS Axis database.
  - c Click **Select** in the *Database* field and select the PCS Axis database on the database server.
  - d Click  **Save** to save settings.

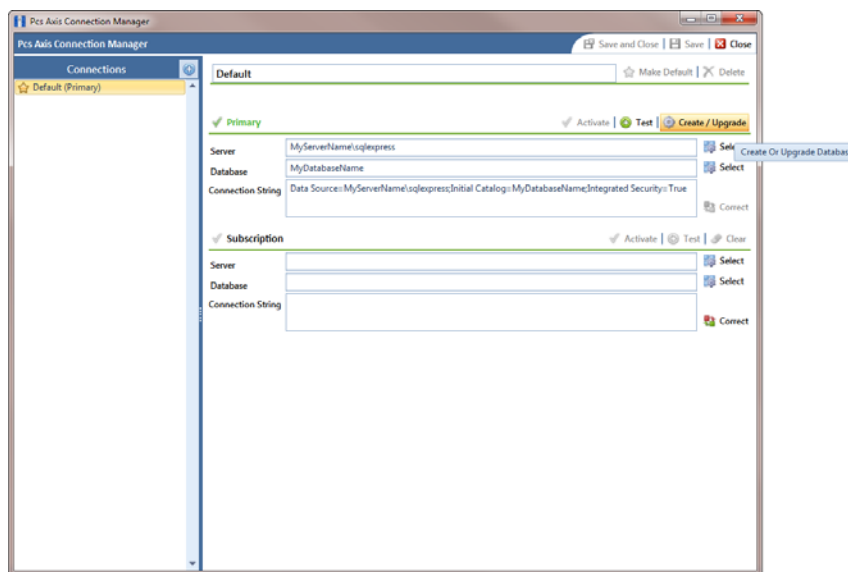






Figure 11. *PCS Axis Connection Manager*

- e If the PCS Axis database has previously been upgraded to v1.6, click  **Close** to exit *PCS Axis Connection Manager* and then continue with step 12 (page 13).
- f Click  **Create / Upgrade** to begin the database upgrade.

The *Create Or Update Database* window opens when the upgrade process begins (Figure 12, page 13). This window provides status information throughout the process. When the following message displays in the window, the database upgrade is complete:

*Update completed.*

- g Click  **Close** to close the *Create Or Update Database* window.
- h Click  **Close** to exit *PCS Axis Connection Manager* and then click **Finish** in *Setup Wizard* to close the PCS Axis installation file.

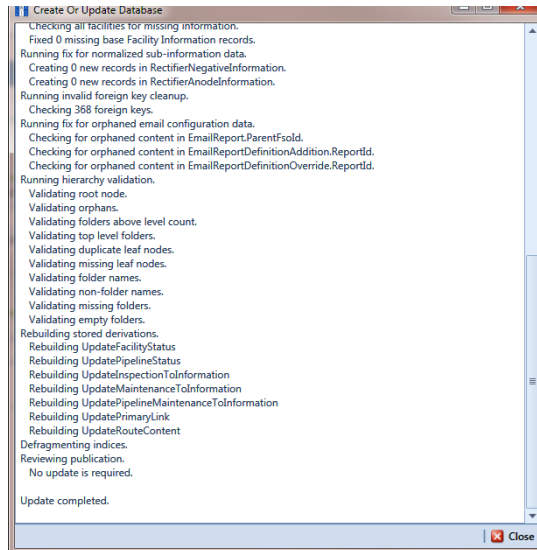




Figure 12. Create Or Update Database

**12** To verify the upgrade installation completed successfully, use the following steps to verify the PCS Axis application and database version is **1.6**:

- a** Start PCS Axis on the client computer. Click the Windows  **Start** button, then click **All Programs** >  **PCS Axis 1.6**.
- b** Click **Help** > **About PCS Axis** to open the *About* window. Verify **Version 1.6** displays as shown in the following figure (Figure 13).

**NOTE:** Clicking *Copy To Clipboard* in the *About* window copies the following information to the Windows clipboard: database connection; application version; and build information (date and time). After copying information to the clipboard, you can then paste it in an email or other type of document, such as Microsoft® Word. Use this feature when contacting PCS Technical Services for support with PCS Axis.

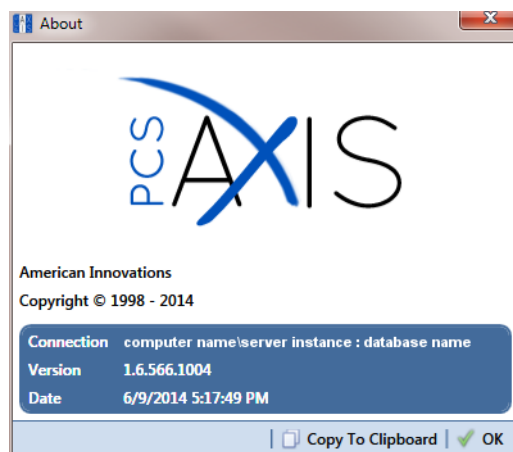





Figure 13. About PCS Axis

- 13 Repeat steps 2 through 12 (pages 10-13) to upgrade all other client computers to *PCS Axis v1.6*.
- 14 After upgrading all client computers to v1.6, complete the following steps to upgrade *PCS Axis Job Service* on the network server:
  - a Open the folder containing the PCS Axis 1.6 download package.
  - b Double-click the PCS Axis installation file labeled **PCSAxis\_1.6.xx.exe** to open the PCS Axis dialog box (Figure 8, page 10). The letters "xx" are used only as a placeholder to represent the actual numbers used in the name of the installation file.
  - c Follow on-screen prompts in *Setup Wizard*. When prompted to install *PCS Axis Job Service*, click the down arrow in  **PCS Axis Job Service 1.6** and select the option **Entire feature will be installed on local hard drive**.
  - d When the installation completes, click  **Close** to exit *PCS Axis Connection Manager* and then click **Finish** in *Setup Wizard* to close the PCS Axis installation file.
- 15 If the *PCS Axis Job Service* and PCS Axis database are installed on different network servers, set up a user account to log on as a service in the following manner.

**IMPORTANT:** The user account must be a member of the local domain user group labeled *Axis\_Users*. This user group was previously created by your IT Administrator when installing PCS Axis for the first time. For more information, see the section entitled *Adding the Local Domain User Group* in the AI document entitled *PCS Axis v1.6 Client/Server New Installation with Replication*.

- a Click the Windows  **Start** button and navigate to *Computer*. Right-click **Computer** and select **Manage** in the shortcut menu to open the *Computer Management* console (Figure 14, page 15).
- b Double-click **Services and Applications** in the left pane of the console. Then click **Services** to display a list of services in the middle pane.

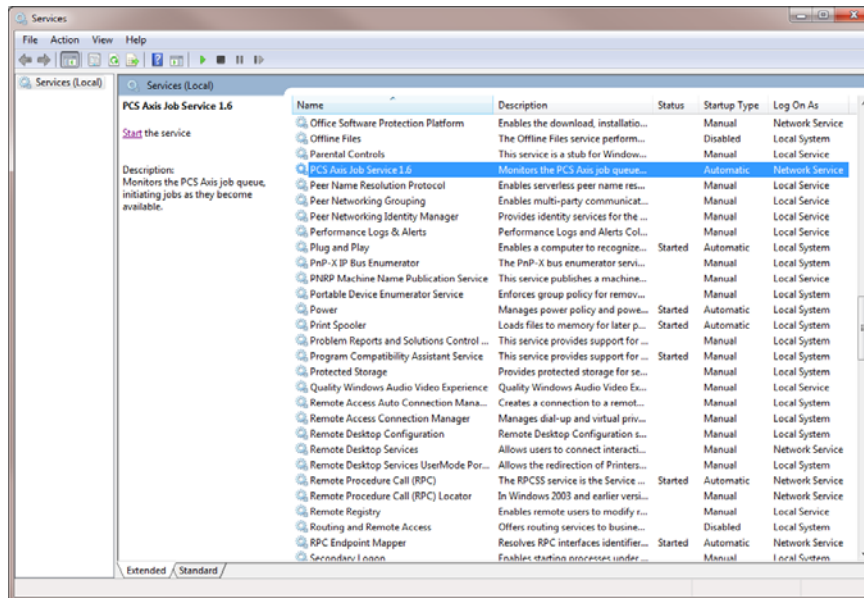


Figure 14. Computer Management Console

- c Right-click **PCS Axis Job Service 1.6** in the middle pane (Figure 14) and select **Properties** in the shortcut menu to open the *Properties* dialog box (Figure 15).
  - d Click the **Log On** tab in the *Properties* dialog box and select the option **This account**. To set up a user account to log on as a service, type the user name and password in the appropriate fields. You can also view a list of appropriate user accounts by clicking *Browse > Advanced > Find Now*.
- NOTE:** The user account must be a member of the *Axis\_Users* group and have access to the central database server and PCS Axis database.
- e Click **Apply** and then **OK** to close the *Properties* dialog box and return to the *Computer Management* console.

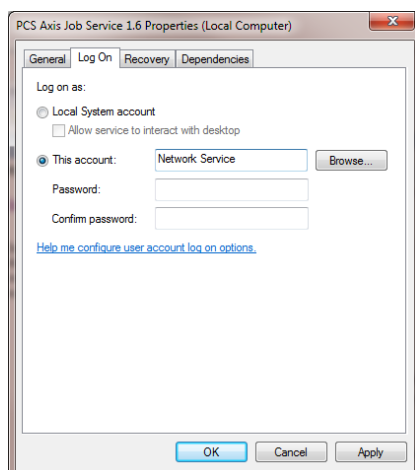


Figure 15. PCS Axis Job Service 1.6 Properties

- 16 Complete the following steps in the *Computer Management* console to start *PCS Axis Job Service*:
  - a Select **PCS Axis Job Service 1.6** and then click **Start** (Figure 16).
  - b Click **File > Exit** to close the *Computer Management* console.
  - c In PCS Axis, click **Tools > Job Service Viewer**. Verify the message *Running* displays in the *Status* field.

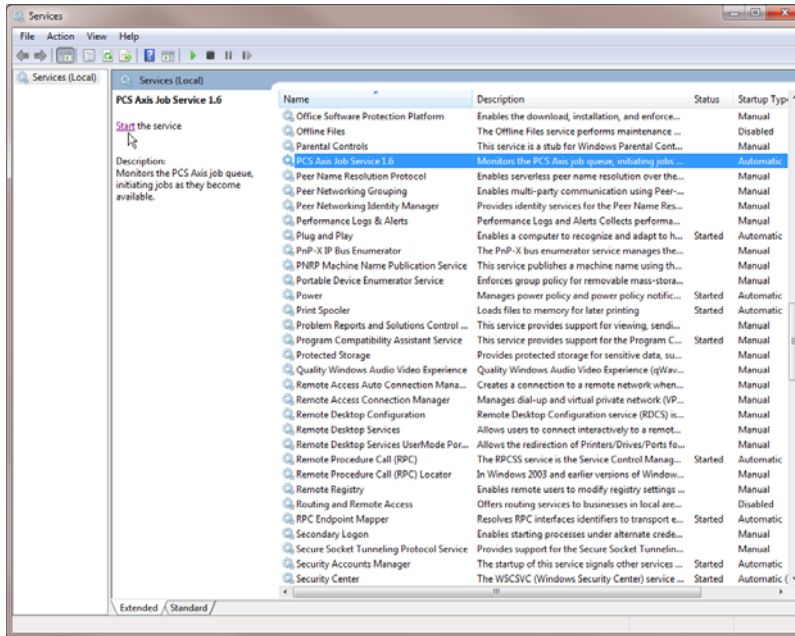


Figure 16. *Computer Management Console*

- 17 Notify the Database Administrator (DBA) the PCS Axis database has been upgraded to v1.6. The DBA can now schedule a database maintenance job on the server for the PCS Axis database. For more details see the next section entitled *Creating a Database Maintenance Job on the Server* (page 17).
- 18 The PCS Axis v1.6 upgrade is now complete. If you use PCS Axis replication to synchronize a subscription database (remote client), continue with the section *Upgrading a PCS Axis Subscription for a Remote Client* (page 18).

## Creating a Database Maintenance Job on the Server

Information in this section is intended for the Database Administrator (DBA). The information applies to a client/server installation of PCS Axis.

Included in the v1.6 database upgrade is a new *Reindex Stored Procedure* labeled *dbo.DefragmentIndexes*. The purpose of the stored procedure is to prevent index fragmentation from occurring in the PCS Axis database, which in turn results in slow system performance. Index fragmentation may occur after importing large amounts of data in PCS Axis using *Bridge Import*, *Bullhorn Bridge*, or *Field Computer*.

After the database has been upgraded to v1.6, create a scheduled database maintenance job on the central database server using the *Reindex Stored Procedure*. Schedule the database maintenance job to run daily or once a week during an off-peak time. Scheduling the database maintenance job at regular intervals will ensure optimum system performance by reorganizing and defragmenting the indexes in the PCS Axis database. For more information about database maintenance, visit the Microsoft® website at [http://technet.microsoft.com/en-us/library/ms187658\(v=sql.105\).aspx](http://technet.microsoft.com/en-us/library/ms187658(v=sql.105).aspx).

**NOTE:** A process included in the *Reindex Stored Procedure* sets the “fill factor limit” of the PCS Axis database. If you want to reset the “fill factor limit”, use Microsoft SQL Server® Management Studio (SSMS) to run the optional utility script provided in the PCS Axis v1.6 download package. The optional utility script is labeled *Defrag Fill Factor Reset Post Deployment.SQL*.

After the PCS Axis database has been upgraded to v1.6, complete the following steps on the central database server:

- 1 Start SQL Server Management Studio (SSMS). Click **Start > All Programs > Microsoft SQL Server 2008 R2 > SQL Server Management Studio**.
- 2 Use SSMS to create a scheduled database maintenance job for the PCS Axis database using the *Reindex Stored Procedure* labeled **dbo.DefragmentIndexes**. Set the job to run daily or once a week during an off-peak time.

**IMPORTANT:** AI recommends running the stored procedure daily or once a week during non-peak hours.

For a best practice guide in creating database maintenance jobs, visit the Microsoft website at [http://technet.microsoft.com/en-us/library/ms187658\(v=sql.105\).aspx](http://technet.microsoft.com/en-us/library/ms187658(v=sql.105).aspx).

- 3 Exit SSMS.



## Upgrading a PCS Axis Subscription for a Remote Client

Information in this section explains how to upgrade a subscription database on a remote client computer. If you are using PCS Axis in a client/server network with replication, the PCS Axis database on the central database server must first be upgraded before completing the instructions in this section. If needed, see *Upgrading a Client/Server Installation of PCS Axis* (page 9) for more information.



Upgrading a subscription includes the following tasks:

- Synchronize the subscription database with the PCS Axis database on the central database server. The synchronization process upgrades the subscription database to v1.6.
- Upgrade the PCS Axis application using the installation file provided in a download package from PCS Technical Services. For more information about the download package, see *PCS Axis v1.6 Download Package* (page 9).

Complete the following steps:

- 1 Synchronize the subscription database with the publication database as follows:
  - a Start PCS Axis. Click the Windows  **Start** button, then click **All Programs** >  **PCS Axis 1.6**.
  - b Click **Tools** in the main menu and then select **Synchronize Now**.

**NOTE:** The synchronization process upgrades the subscription database. When the process completes, a message displays stating the database is at a higher version than the application and then PCS Axis shuts down.

- 2 If you are upgrading *PCS Axis v1.4* or earlier, uninstall PCS Axis. Click the Windows  **Start** button, then click **All Programs** >  **PCS Axis 1.4** > **Uninstall PCS 1.4**.

**NOTE:** The upgrade process automatically uninstalls PCS Axis when upgrading from v1.5 to v1.6; manually uninstalling v1.5 is no longer required. Upgrading a version previous to v1.5 does however require uninstalling the older version of PCS Axis.

- 3 Complete the following steps to install the PCS Axis v1.6 application:
  - a Open the folder containing the PCS Axis 1.6 download package.
  - b Double-click the installation file labeled **PCSAxis\_1.6.xx.exe** to open the PCS Axis dialog box (Figure 17). The letters "xx" are used only as a placeholder to represent the actual numbers used in the name of the installation file.

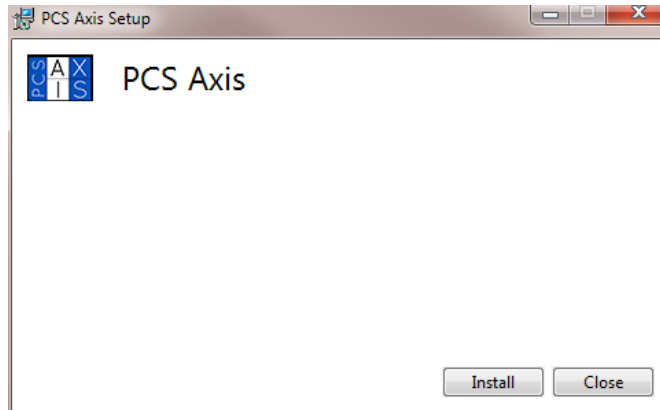


Figure 17. PCS Axis Installation

- c Click **Install** in the PCS Axis dialog box to open *Setup Wizard* (Figure 18).

**NOTE:** After clicking *Install* the PCS Axis installer verifies if Microsoft .NET Framework is installed on the computer. If .NET Framework is not installed, the PCS Axis installer automatically installs it and then continues with the PCS Axis installation.

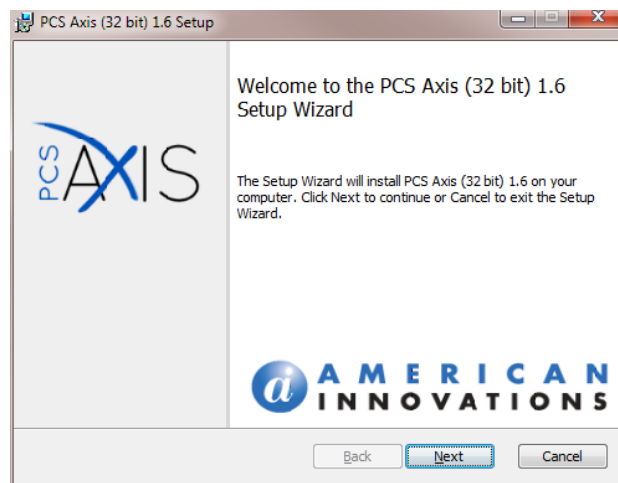




Figure 18. Setup Wizard

- d Click **Next** to display *Custom Setup* (Figure 19).
- e By default the  **PCS Axis** application is selected for installation. The  **PCS Axis Job Service** **should not** be selected for installation. Verify selections in *Custom Setup* match those in the next figure (Figure 19).
- f Click **Next** and then click **Install** to upgrade the PCS Axis application.

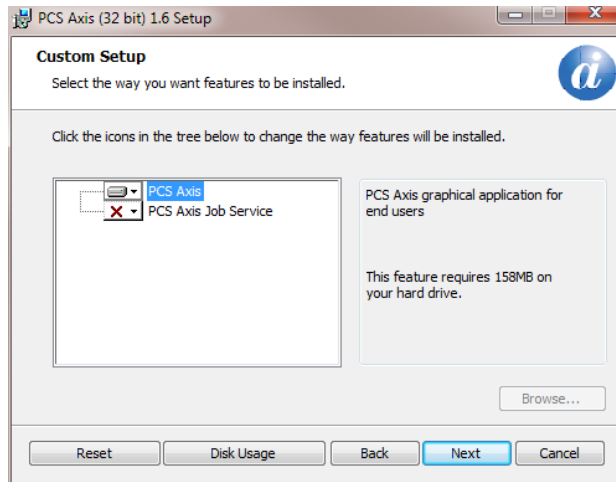








Figure 19. *Custom Setup*

- 4 When the installation completes and after a short delay, *PCS Axis Connection Manager* opens. Click  **Close** to exit *PCS Axis Connection Manager*.
  - 5 Complete the following steps to establish a connection to the subscription database:
    - a Start *PCS Axis Connection Manager*. Click the Windows  **Start** button, then click **PCS Axis 1.6** >  **PCS Axis Connection Manager 1.6** (Figure 20, page 21).
    - b Click  **Test** in the *Subscription* group box to verify a connection to the subscription database.
    - c When the message *Connection successful* displays, click  **OK** to close the message. Then click  **Close** to exit *Connection Manager*.
  - 6 Repeat steps 1 through 5 (pages 18-20) to upgrade all other subscriptions to *PCS Axis v1.6*.
- The subscription upgrade installation is now complete.

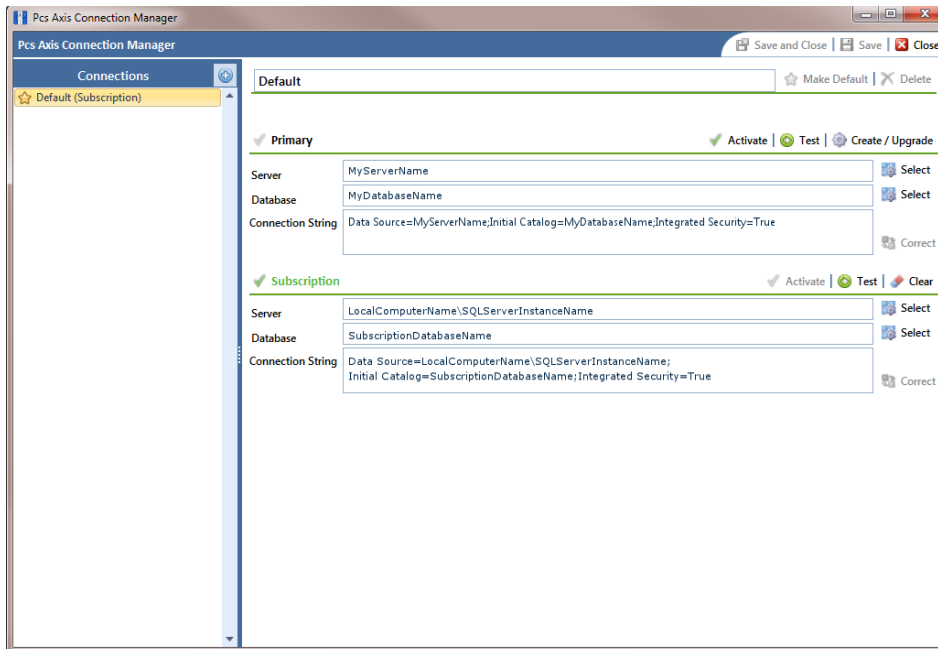




Figure 20. Connection Manager

## Upgrading a Single-User Local Installation in a Non-Client/Server Network

The procedure in this section explains how to upgrade a local installation of PCS Axis for a single-user in a non-client/server network. The process upgrades the PCS Axis database, application, and job service agent to v1.6.

Upgrade the PCS Axis application and database using the installation file provided in a download package from PCS Technical Services. For more information about the download package, see *PCS Axis v1.6 Download Package* (page 9).

Complete the following steps:

- 1 Make a backup of the PCS Axis database using the following steps:
  - a Run Microsoft SQL Server Management Studio (SSMS) and establish a connection to the PCS Axis database.
  - b Use SSMS to make a backup of the PCS Axis database. Exit SSMS when you finish.
- 2 If you are upgrading *PCS Axis v1.4* or earlier, uninstall PCS Axis. Click the Windows  **Start** button, then click **All Programs** >  **PCS Axis 1.4** > **Uninstall PCS 1.4**.

**NOTE:** The upgrade process automatically uninstalls PCS Axis when upgrading from v1.5 to v1.6; manually uninstalling v1.5 is no longer required. Upgrading a version previous to v1.5 does however require uninstalling the older version of PCS Axis.

- 3 Open the folder containing the PCS Axis 1.6 download package.
- 4 Double-click the PCS Axis installation file labeled **PCSAxis\_1.6.xx.exe** to open the PCS Axis dialog box (Figure 21). The letters "xx" are used only as a placeholder to represent the actual numbers used in the name of the installation file.

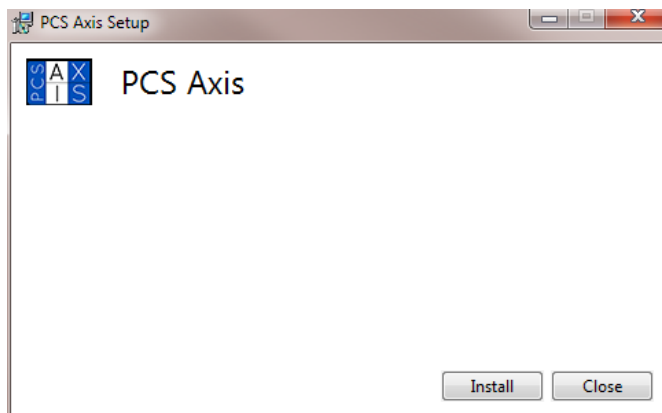


Figure 21. PCS Axis Installation

- 5 Click **Install** in the PCS Axis dialog box to open *Setup Wizard* (Figure 22).

**NOTE:** After clicking *Install* the PCS Axis installer verifies if Microsoft .NET Framework is installed on the computer. If .NET Framework is not installed, the PCS Axis installer automatically installs it and then continues with the PCS Axis installation.

- 6 Click **Next** to read the *End-User License Agreement*. To accept the license agreement, click the check box **I accept the terms in the License Agreement** to place a check mark inside the check box.

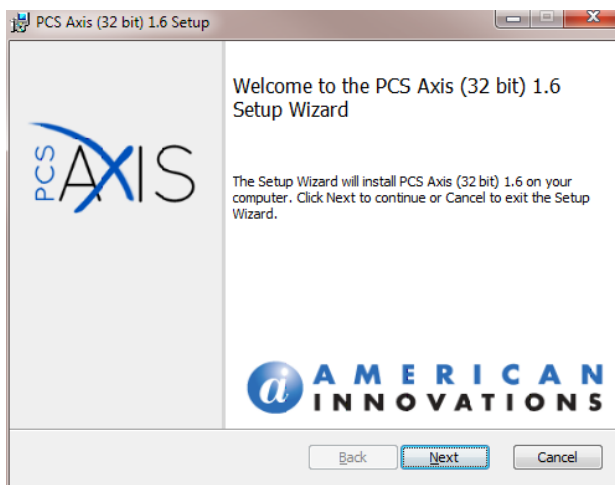



Figure 22. Setup Wizard

- 7 Click **Next** to display *Custom Setup* (Figure 23).
- 8 By default the  **PCS Axis** application is selected for installation as shown in the next figure (Figure 23). No changes are required to the default setting.

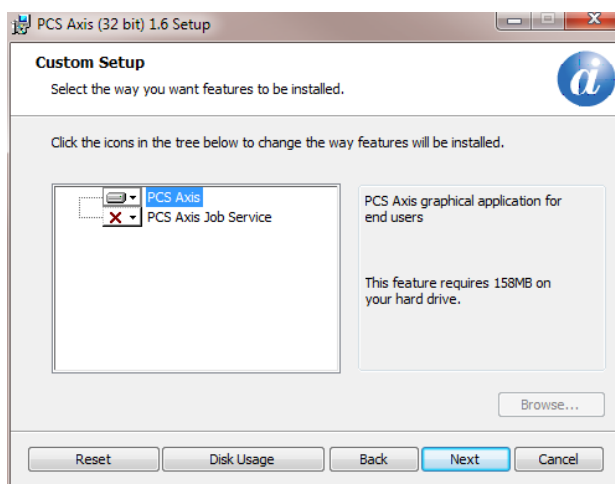







Figure 23. Custom Setup

- 9 Click the down arrow in  **PCS Axis Job Service** and select the option **Entire feature will be installed on local hard drive** to upgrade the job service.
- 10 Click **Next** and then click **Install** to begin the installation.
- 11 When the installation completes and after a short delay, *PCS Axis Connection Manager* opens. Click  **Close** to exit *PCS Axis Connection Manager*.
- 12 Complete the following steps to upgrade the PCS Axis database using *PCS Axis Connection Manager*:
  - a Start *PCS Axis Connection Manager*. Click the Windows  **Start** button, then click **All Programs > PCS Axis 1.6 >  PCS Axis Connection Manager 1.6** (Figure 24).
  - b Click **Select** in the *Server* field and select the local SQL server instance.
  - c Click **Select** in the *Database* field and select the PCS Axis database.
  - d Click  **Save** to save settings.

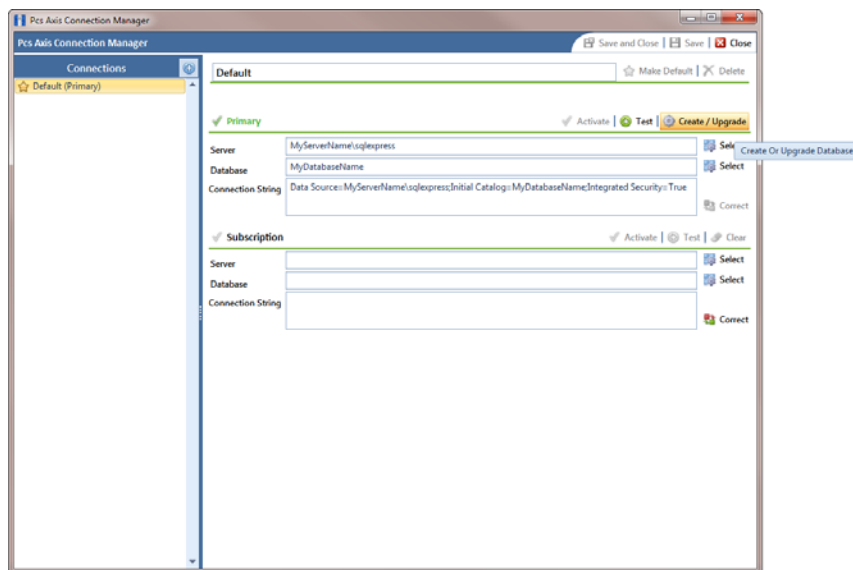



Figure 24. *PCS Axis Connection Manager*

- e Click  **Create / Upgrade** to begin the database upgrade.

The *Create Or Update Database* window opens when the upgrade process begins (Figure 25). This window provides status information throughout the process. When the following message displays in the window, the database upgrade is complete:

*Update completed.*

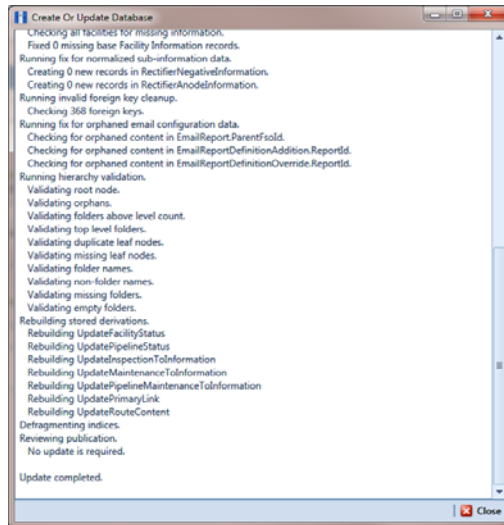






Figure 25. Create Or Update Database

- f Click  **Close** to close the *Create Or Update Database* window.
- g Click  **Close** to exit *PCS Axis Connection Manager*. Then click **Finish** in *Setup Wizard* to close the PCS Axis installation file.
- 13 To verify the upgrade installation completed successfully, use the following steps to verify the PCS Axis application and database version is **1.6**:
- a Start PCS Axis on the client computer. Click the Windows  **Start** button, then click **All Programs** >  **PCS Axis 1.6**.
- b Click **Help** > **About PCS Axis** to open the *About* window. Verify **Version 1.6** displays as shown in the following figure (Figure 26). If the version number is different, contact PCS Technical Services for assistance using the contact information on page 29.

**NOTE:** Clicking *Copy To Clipboard* in the *About* window copies the following information to the Windows clipboard: database connection; application version; and build information (date and time). After copying information to the clipboard, you can then paste it in an email or other type of document, such as Microsoft® Word. Use this feature when contacting PCS Technical Services for support with PCS Axis.

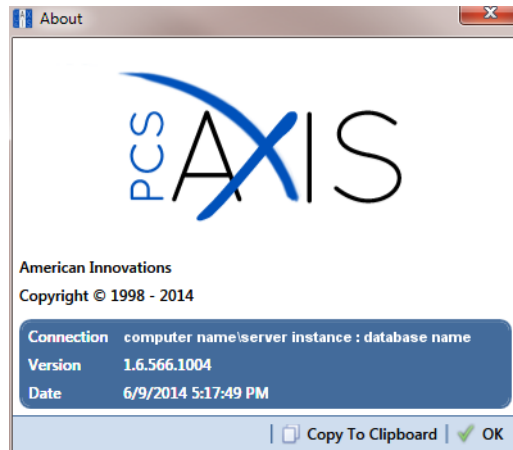



Figure 26. About PCS Axis

**14** Complete the following steps to start *PCS Axis Job Service*:

- a Click the Windows  **Start** button and navigate to *Computer*. Right-click **Computer** and select **Manage** in the shortcut menu to open the *Computer Management* console (Figure 27).
- b Double-click **Services and Applications** in the left pane of the console. Then click **Services** to display a list of services in the middle pane.

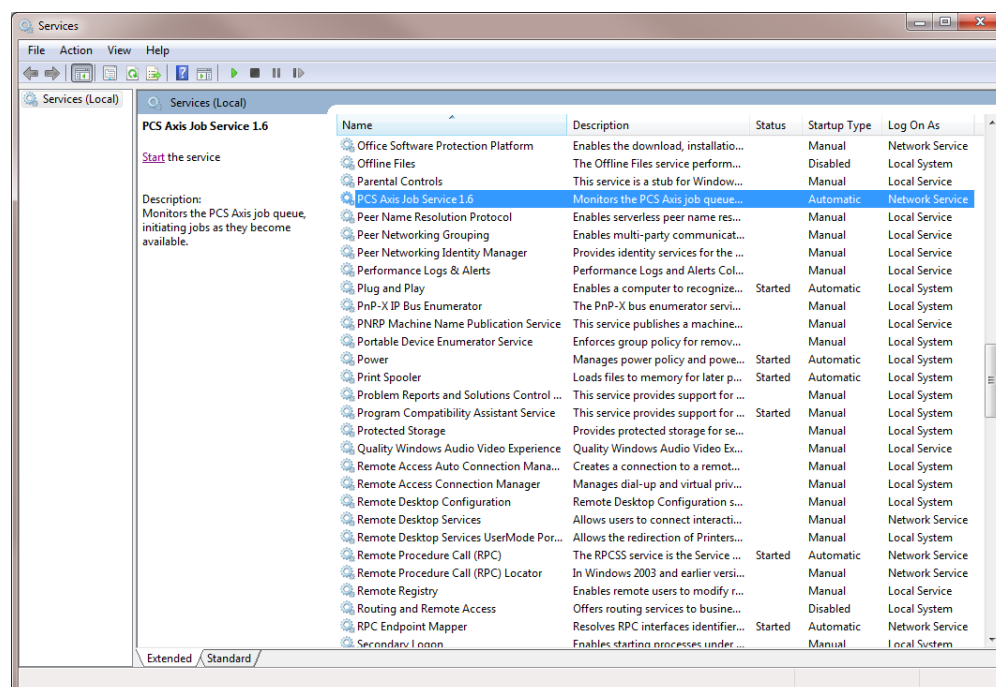


Figure 27. Computer Management Console

- c Right-click **PCS Axis Job Service 1.6** (Figure 27, page 26) and select **Properties** in the shortcut menu to open the *Properties* dialog box (Figure 28).
- d Click the **Log On** tab and select the option **Local System account**. Then click the check box **Allow service to interact with desktop**.
- e Click **Apply** and then **OK** to close the *Properties* dialog box and return to the *Computer Management* console.

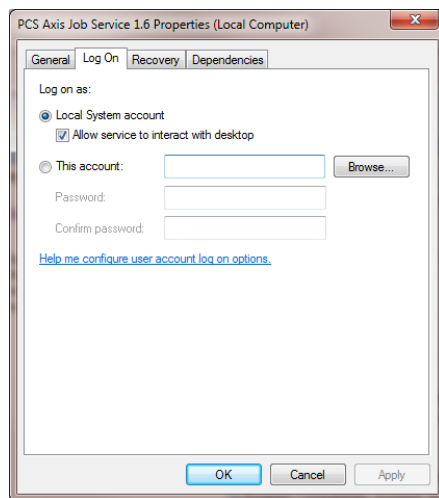


Figure 28. PCS Axis Job Service 1.6 Properties

- f Select **PCS Axis Job Service 1.6** and then click **Start** (Figure 29, page 28).
- g Click **File > Exit** to close the *Computer Management* console.
- h In PCS Axis, click **Tools > Job Service Viewer**. Verify the message *Running* displays in the *Status* field.

The PCS Axis v1.6 upgrade is now complete.

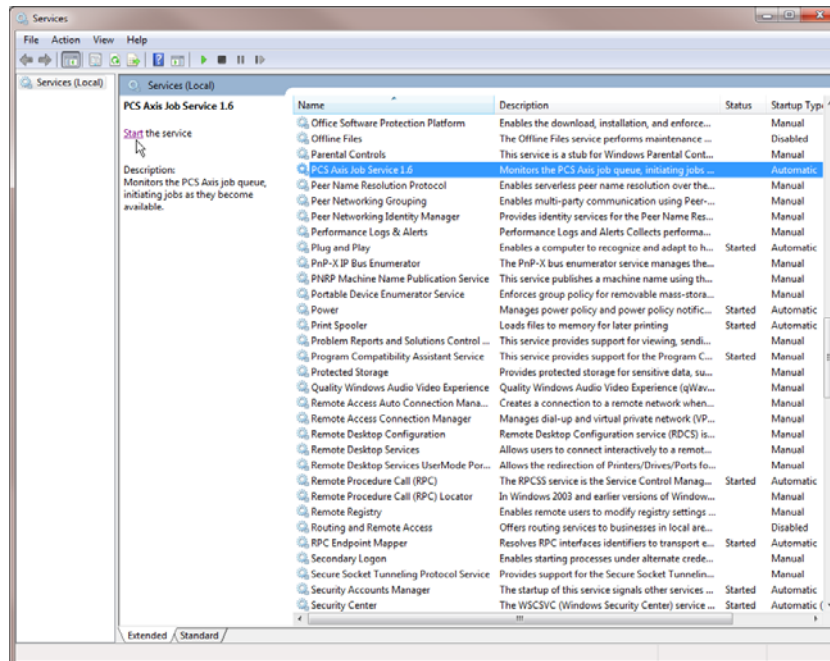


Figure 29. Computer Management Console

## Product Support and Training

If you have a suggestion, question, feature request, or a bug to report-your feedback would be appreciated. Also if you have a training need for your organization or would like to know more about upcoming PCS Axis training classes, use any of the following contact information to reach PCS Technical Services:

Support E-mail: [pcstechservices@aiworldwide.com](mailto:pcstechservices@aiworldwide.com)  
Support Telephone: 1-800-229-3404 (select 1, then press 2)  
American Innovations: <http://www.aiworldwide.com>